

Overview

This Quick Start guide is intended to help you with the basic installation and setup of your Polaris Integrated Welder (IW) system. Consult your Instruction Manual (BU-4001363) for detailed information on ventilation, environmental requirements, system operation, HMI interface access, maintenance, and troubleshooting.

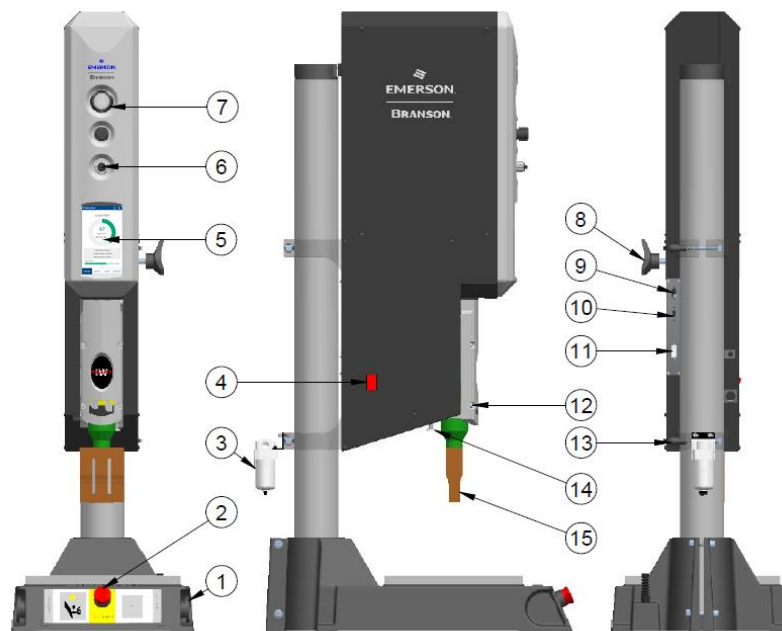
Configuration

The Polaris IW system should be accessible for parameter changes or settings, located in an area away from radiators or heating vents, and positioned so it does not draw in dust, dirt, or material via its cooling fan.

Two configurations: Benchttop / Standalone & Hub mount automation

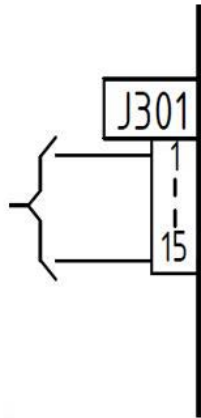


Manual Control Instruction



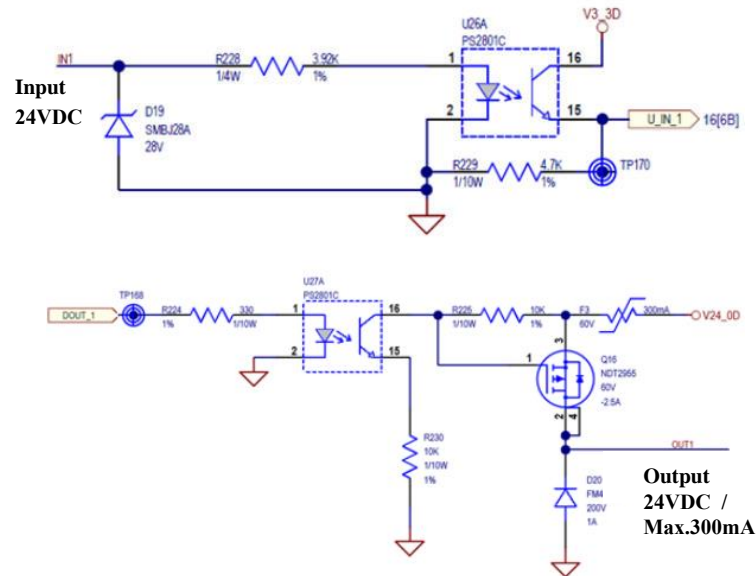
Item	Description	Item	Description
1	Start Switch / Start to Welding	9	User I/O Connector
2	Emergency Stop / Stop Cycle	10	USB / Software Upgrade
3	Air Filter / Air Tube 8mm	11	Base Cable Connector
4	Circuit Breaker (On / Off)	12	Screws / Carriage Cover Lock
5	HMI	13	Handles / Actuator Lock
6	Speed Valve / Control Speed	14	Mechanical Stop Knob
7	Regulator / Control Air Pressure	15	Stacker
8	Knob / Lift Actuator Up & Down		

I/O Connections (15-pin HD D-Sub Connector)

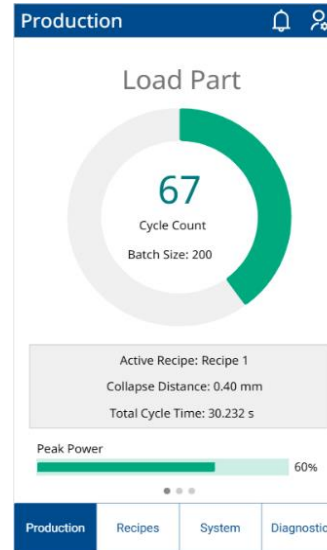


User I/O			
Pin No.	Signal Name	Signal Type	Signal Range
1	24VDC	Power 24VDC	24VDC
2	24VDC	Power 24VDC	24VDC
3	24VDC	Power 24VDC	24VDC
4	RESET	Input	0/24VDC
5	IN2	Input	0/24VDC
6	IN3	Input	0/24VDC
7	IN4	Input	0/24VDC
8	Alarm	Output	0/24VDC, max 300mA
9	Ready	Output	0/24VDC, max 300mA
10	Weld ON	Output	0/24VDC, max 300mA
11	Clamp Fixture	Output	0/24VDC, max 300mA
12	GND	GND	---
13	GND	GND	---
14	GND	GND	---
15	GND	GND	---

Typical I/O Wiring Examples:



HMI Interface



Menu	Page Description
Product	Monitor Basic Welding Data
	Monitor History & Alarm Log
	Monitor Welding Curve
Recipes	Create / Delete / Edit Recipe
	Weld Mode / Process / Limit Setting
	Stack Ramp Setting
System	Configuration / Setting Unit & Language
	Calibration / Calibrate System
	Admin / Change the User Right
	Service Count / Key Components Using Max Cycle
	User I/O: 4 Output & 1 Input
Diagnostics	Information / System Information and Upgrade Software
	Scan / Horn Scan
	Test / Test the Frequency, Memory, Power
Actuator Setup / Horn Mode, Check Force and Speed	

Test Equipment

To test the system, follow the steps listed below:



- Ensure that no one is in contact with the horn when testing the system
- Do not cycle the welding system if converter is disconnected.

1. Ensure the power plug has been connected with external power supply.
2. Ensure the air tube has been connected.
3. Turn on Circuit Breaker (On/Off) Switch, the HMI will be turn on.
4. Perform horn scan and ultrasonic test in the "Diagnostics" interface.

More Detailed Operation Information:

See the Instruction Manual : BU-4001363